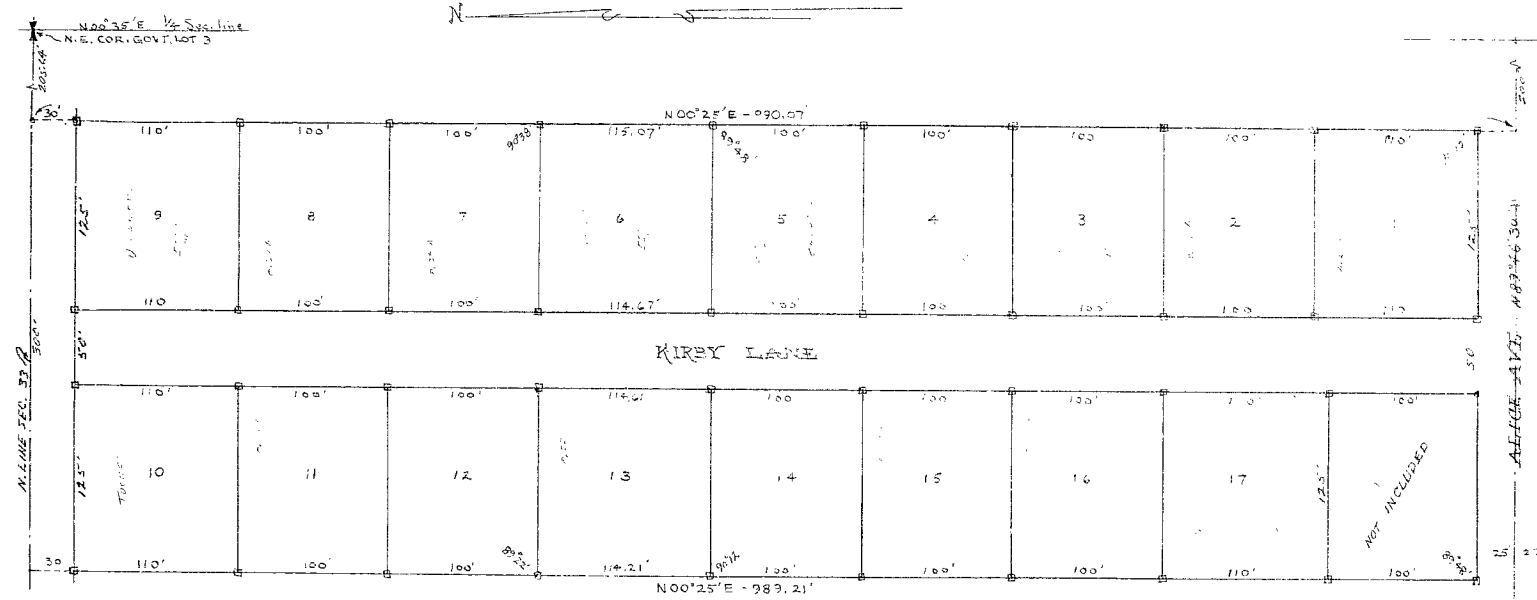


SURVEY MAP  
 SHOWING A DIVISION OF THE EAST 300' OF THE W 400' OF THE EAST 1/2 OF GOVT LOT 3 (LYING NORTH OF ALICE AVE) SECTION 32, T 37 S, R 41 E, MARTIN COUNTY, FLORIDA.



REFER TO:  
 D. S. 24 - PG. 389  
 D. S. 25 - PG. 318  
 D. S. 28 - PG. 347  
 SURVEY BY GEORGE W. BROWN, SEPT 19, 1956.  
 \* = CONCRETE MONUMENT

I HEREBY CERTIFY THAT THE ATTACHED MAP IS A TRUE AND CORRECT REPRESENTATION OF A SURVEY MADE BY ME AND THAT SAID SURVEY WAS ACCURATE.

*Randell E. Fisher*  
 RAND. SURVEYOR CERT. NO. 1940

18.1

CONDITION OF DOCUMENT  
 UNSUITABLE FOR MICROFILMING

RANDELL E. FISHER  
 SURVEYOR  
 STUART FLORIDA

D. M. KIRBY

DATE 7/30/71 SCALE 1"=50'